



HSM StoreEx HDS 150 - 19/16



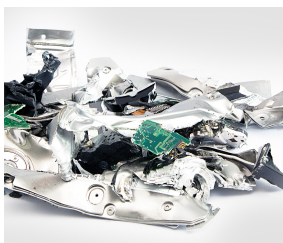
HSM StoreEx HDS 150 digital data media shredder

The HSM StoreEx HDS 150 digital data media shredder destroys digital media devices in a safe and economical way – and is data protection compliant as well.

Technical data

Order number:	1772117	Cutting capacity HDD up to 3,5":	210 St/h
EAN	4026631057691	Cutting capacity CD/DVD:	4200 St/h
Cutting type:	strip cut	Cutting capacity magnetic tapes:	280 St/h
Cutting size:	19/16"	Loading aperture Length x Width x Height:	11.42" x 6.5" x 2.36"
Security level (DIN 66399):	E-2 H-3 T-1	Noise level (idle operation):	ca. 61 dB(A)
Driving power:	2.01 HP	Width x Depth x Height:	47.24" x 32.09" x 52.17"
Voltage / Frequency:	120 V / 50 Hz/60 Hz	Weight:	1177.27 lb
Intake width:	6.5"	Shredder material:	Staples and paper clips, Credit card, CD/DVD, Floppy disk, Hard drives up to 3.5", Magnetic tapes up to 3.5"
Container volume / collecting:	10.6 gal		

Product information



A conventional 3.5 inch hard disk is cut into at least three parts ("H-3 security cut"). The security level is thus many times higher than with conventional methods.



The digital data media shredder is operated with single-phase power connection.

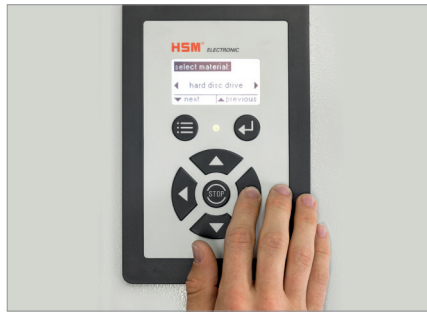


The waste container can be easily removed and emptied.



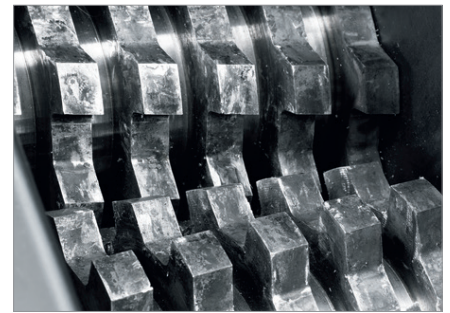
Continuous energy-saving operation with low noise level

This powerful machine provides an excellent cutting performance combined with reliable continuous operation and a low noise level.



Convenient operation via the membrane keypad with display

The selection of the correct functional mode will always ensure maximum throughput for the respective material type.



Solid steel cutting rollers

The induction-hardened, solid steel cutting rollers are robust and ensure a long operating life.



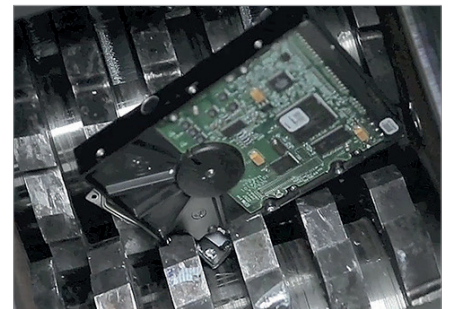
LED display for continuous input of media

The large and clearly visible LED display enables the continuous input of media at a comfortable working height.



For decentralised destruction

Data media can be shredded easily in decentralised locations with this machine.



Material anti-jam function

The automatic reverse function rectifies material jams and ensures smooth shredding operations.



*HSM StoreEx HDS 150, **HSM StoreEx HDS 230